

## Hire A Worker for On-the-Job Training...Put Solano

# BACK-2-WORK

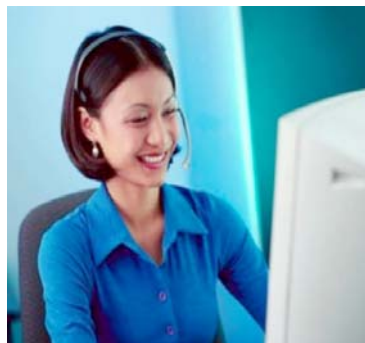
For employers who are willing to hire and provide On-the-Job Training to new employees, the Workforce Investment Board (WIB) of Solano County offers a wage reimbursement during the time that a new hire is being trained. The rate of the wage reimbursement is based on the number of employees:

### Wage Reimbursement Range

<b>0 – 50 Employees</b>	<b>50% to 90%</b>
<b>51 – 250 Employees</b>	<b>50% to 75%</b>
<b>251+ Employees</b>	<b>50%</b>

### Here's how it works in 3 SIMPLE STEPS

- (1) **Call (707) 863-3540** and we'll arrange for one of our Business Services Representatives to talk with you and find out about the details of the job opening(s) you are working on filling; and, help you identify which ones might be a fit for an On-the-Job Training wage reimbursement. And, we will answer all your questions about how the wage reimbursement program works and how you receive the funds.
- (2) We will refer candidates to interview with you, as available, from our list of qualified employees that match your requirements.
- (3) If you select one of these candidates, we will work with you to complete some minimal paperwork prior to the employment offer.



**WORKFORCE INVESTMENT BOARD OF SOLANO COUNTY**  
Lorraine Fernandez, Business Services Coordinator  
**(707) 863-3540**

**320 Campus Ln. • Fairfield • CA • 94534 & 1440 Marin St. • Vallejo • CA • 94590**